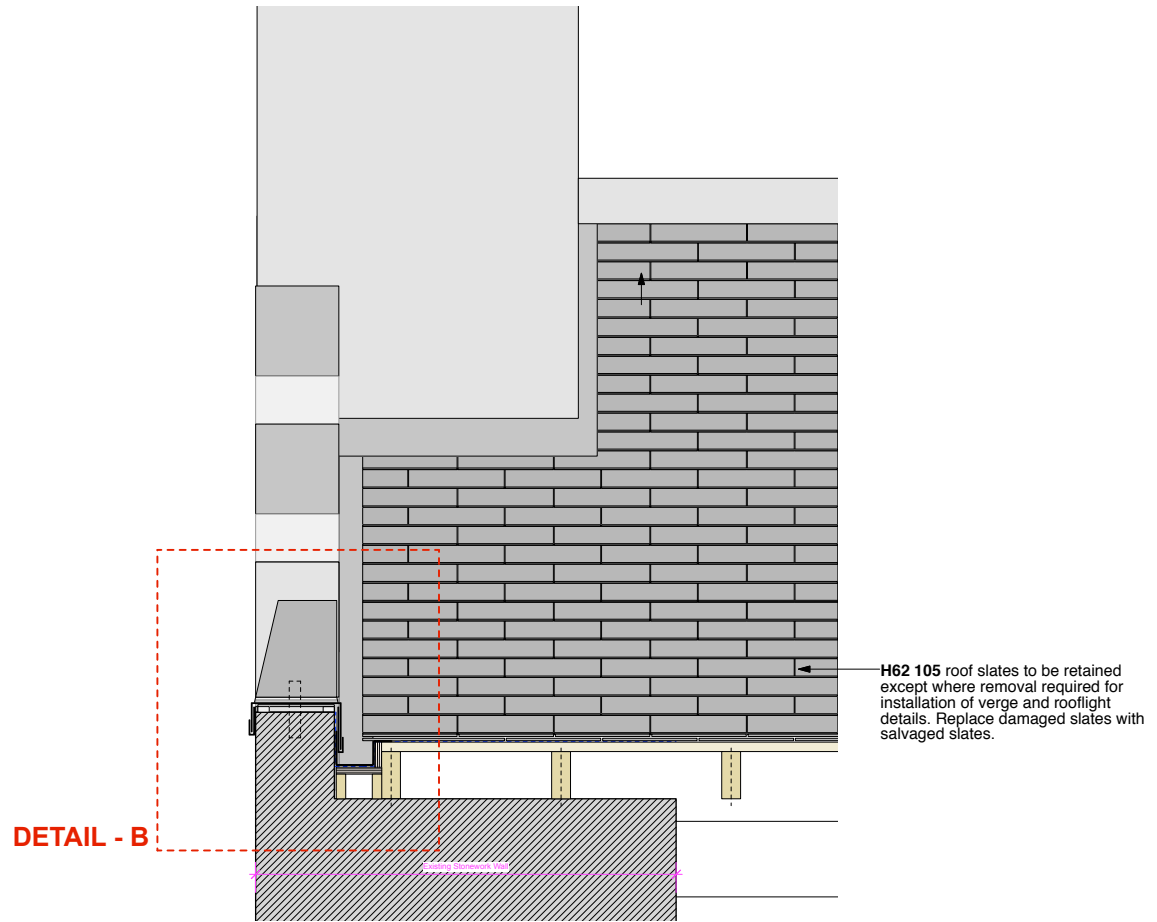
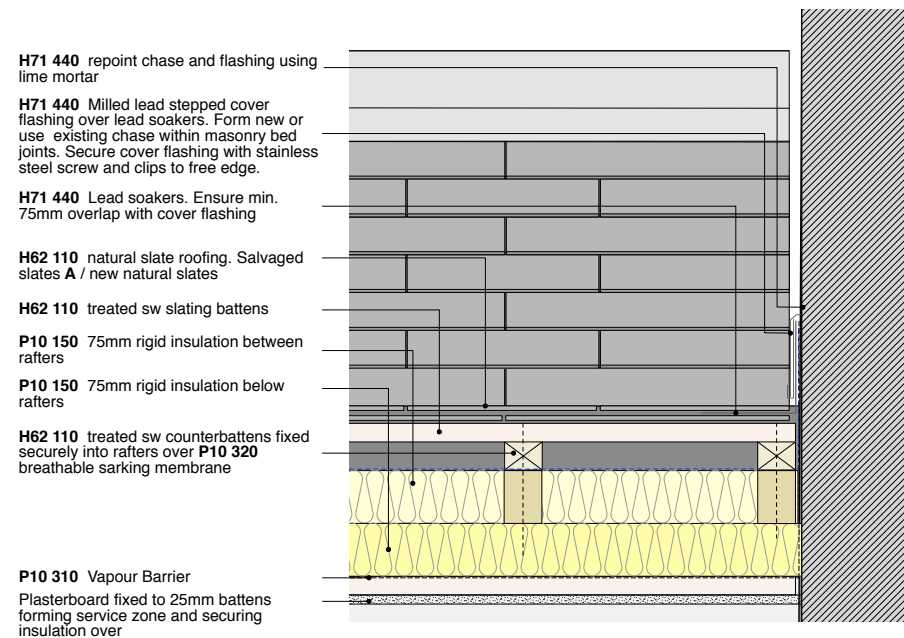


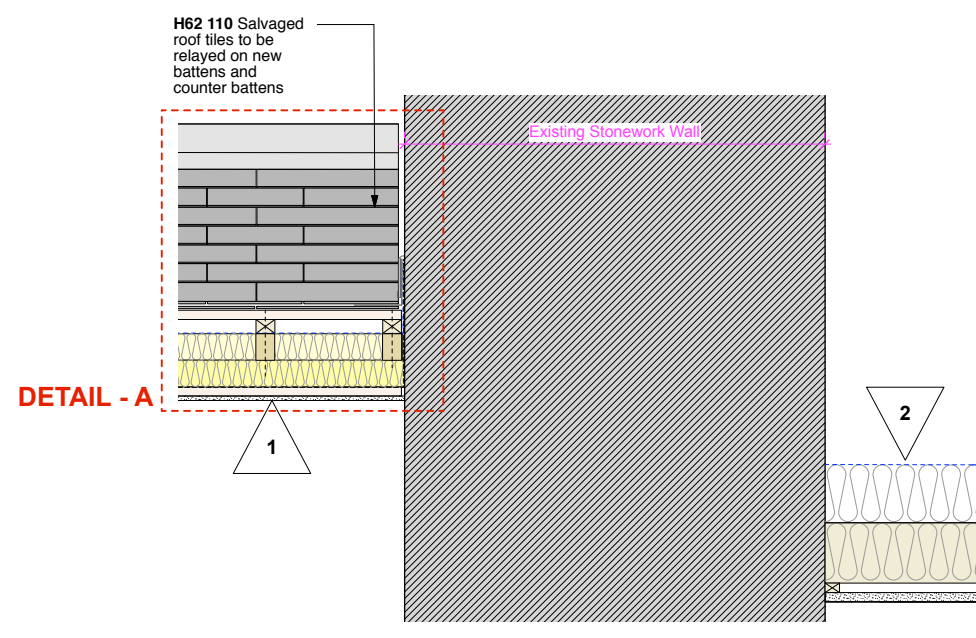
**Detail B - TROWTES HOUSE**  
Lead verge detail 1:5 @ A1



**TROWTES HOUSE**  
Lead verge detail 1:10 @ A1



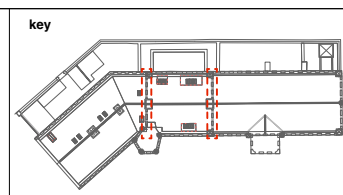
**Detail A - POLICE STATION // TROWTES HOUSE**  
Lead verge detail 1:5 @ A1



**POLICE STATION // TROWTES HOUSE**  
Lead verge detail 1:10 @ A1

**general**

- all drawings are copyright
- do not scale drawing
- report all discrepancies to project administrator
- all dimensions to be checked on site



**notes**

- These details are for planning purposes only and not for construction
- All leadwork to be in accordance with Lead Sheet Association recommended details

**Note:** Alterations and upgrades to existing fabric detailed on demolition plans, details and specification

**rev**

--- --

**Stage 4 - TENDER ISSUE**

<b>project:</b> Tavistock Guildhall and Police Station	<b>date:</b> Oct 2018	<b>scale:</b> 1:5 / 10 @ A1 1:10 / 20 @ A3	<b>drawn:</b> cm
<b>drawing title:</b> TTC - Roof Details - 4 - Trowtes House Abutments	<b>job no:</b> 1041	<b>drawing no:</b> A-503	<b>rev:</b>

**gillespie yunnie architects**

Lower Tweed Mill Shimmers Bridge Dartington Devon TQ9 6JB t 01803 860010 f 01803 864929 e info@gyarchitects.co.uk