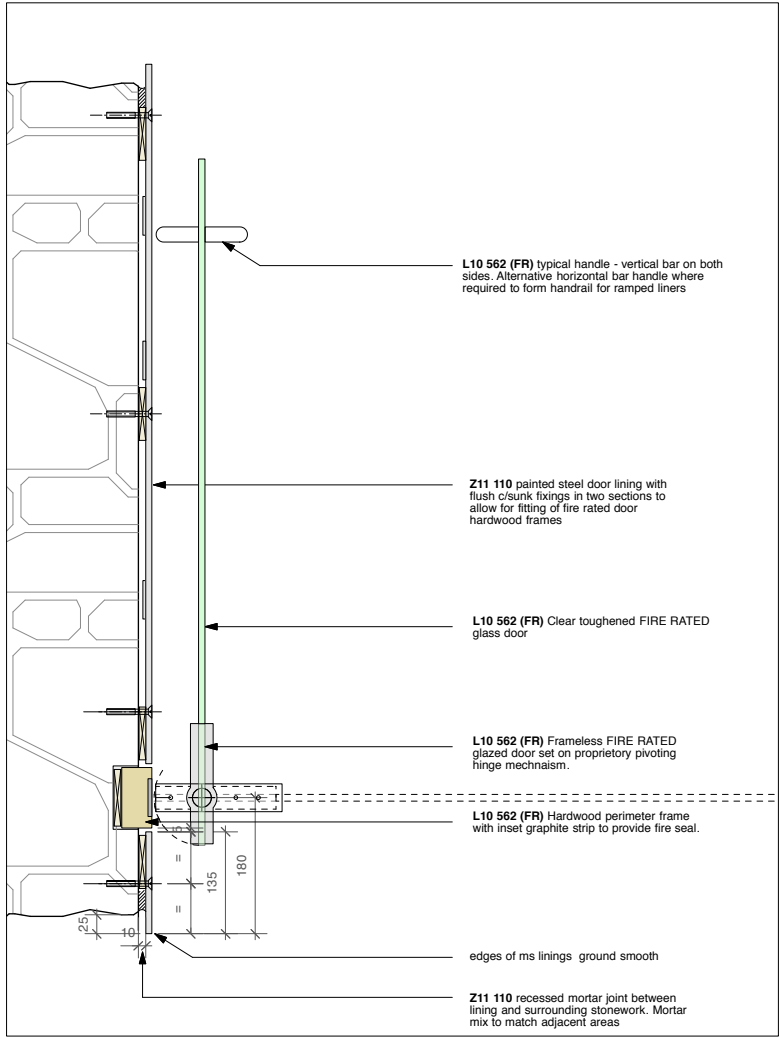
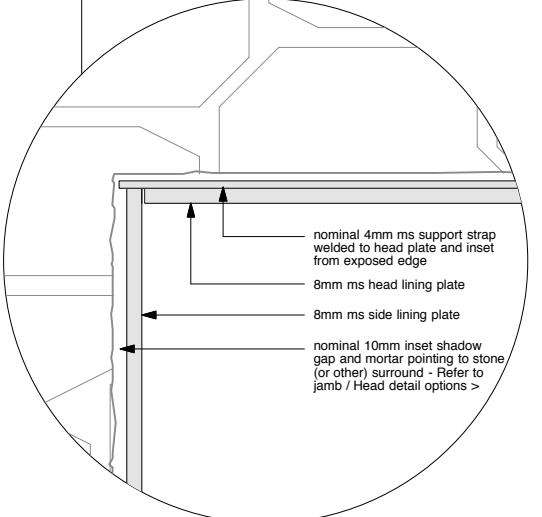


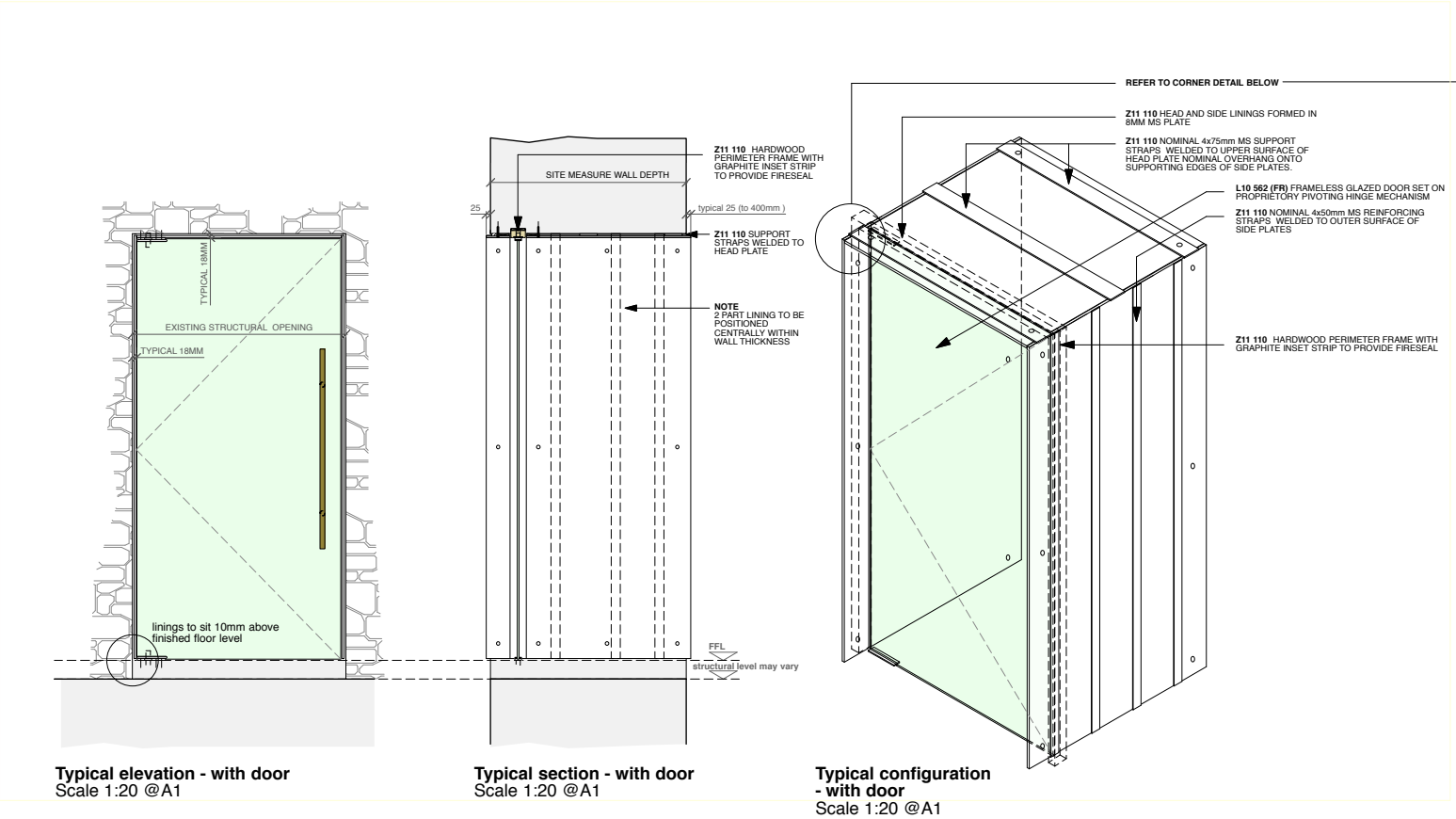
detail - head lining detail with door
Scale 1:5 @A1



detail - jamb lining detail with door
Scale 1:5 @A1



Detail Scale 1:2 @A1



Typical elevation - with door
Scale 1:20 @A1

Typical section - with door
Scale 1:20 @A1

Typical configuration - with door
Scale 1:20 @A1

general
<ul style="list-style-type: none"> all drawings are copyright do not scale drawing report all discrepancies to project administrator all dimensions to be checked on site

key

notes
<ol style="list-style-type: none"> Subcontractor to provide proposed c/sunk fixing detail for approval Finish to steelwork to be painted - colour TBC by Architect Thickness of proposed support straps to be designed by subcontractor. size of all linings indicated to be checked against site openings

rev	---
Stage 4 - TENDER ISSUE	

project: Tavistock Guildhall and Police Station	date: March 2019	scale: Various @ A1 Various @ A3	drawn: if
drawing title: TTC: Details Steel threshold FR linings 03	job no: 1041	drawing no: C-014	rev: -
gillespie yunnie architects			
<small>Lower Tweed Mill Shimmers Bridge Dartington Devon TQ9 6JB t 01803 860010 f 01803 864929 e info@gyarchitects.co.uk</small>			