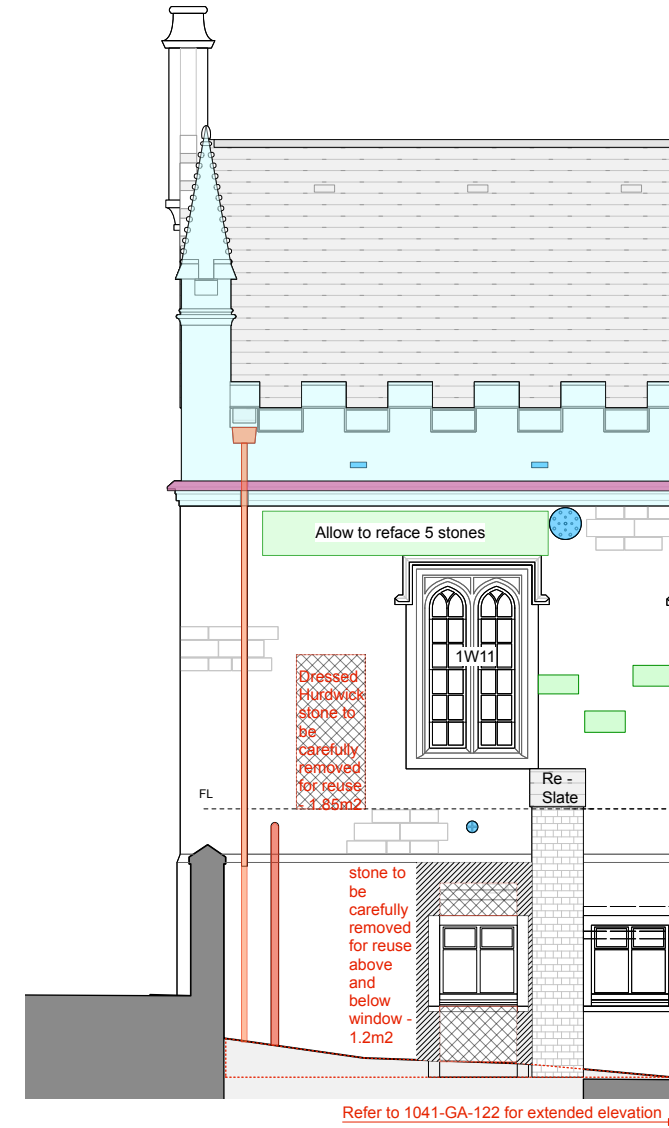
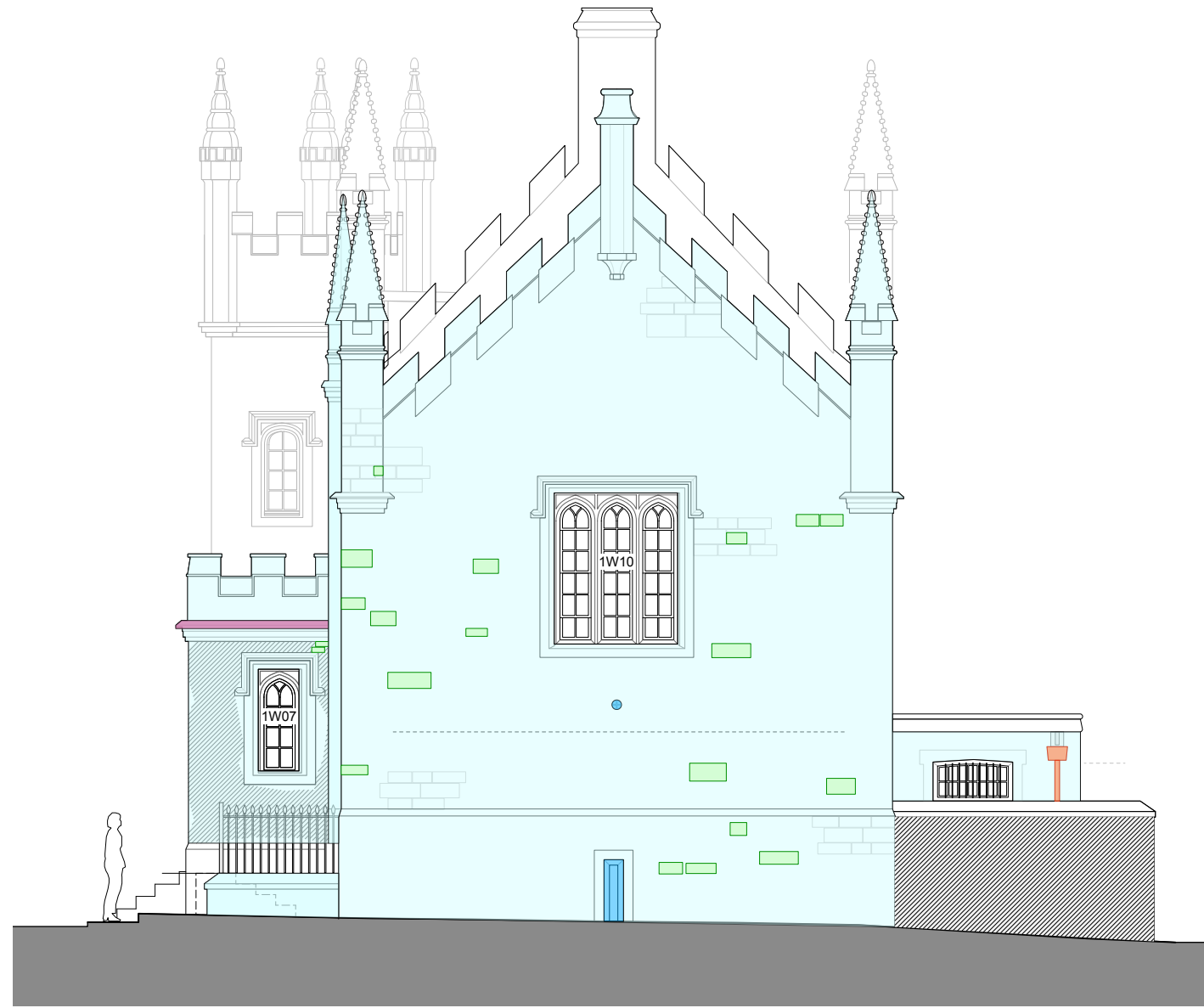


**Notes:**

- All dimensions are based upon survey information supplied by others. All dimensions to be confirmed on site prior to construction. GYA take no responsibility for issues arising from inaccuracies in survey data.
- This drawing is not intended for construction purposes.
- Copyright to remain Gillespie Yunnie Architects Ltd.



<p><b>Stonework</b></p> <p>Repointing. C40 310 + 311 Repoint in this area with lime mix / Reface stones indicated as necessary</p> <p>Cleaning. C40 352 Steam clean to remove heavy stains / repoint with lime mix where necessary</p> <p>External Paintwork. C40 110 Remove paintwork and repoint walls as required or repaint with breathable paint / limewash</p> <p>Reface Stone. C41 110 Reface stone with 125mm reclaimed hurdwick and repoint locally around stone</p> <p>Loose Stone Faces. C41 110 Lightly brush down all loose stone faces until stable</p>	<p><b>Rainwater Goods</b></p> <p>Refurbish. R10 110 Retain and refurbish cast iron rainwater goods / repaint to match railings</p> <p>Replace. R10 375 Replace rainwater goods with new cast iron painted to match railings</p> <p>Remove. R10 110 Remove section of rainwater / soil pipe no longer required</p>	<p><b>Leadwork</b></p> <p>Cornice. H71 420 Cap cornice in lead sheet dressed with welted drip</p> <p>Window Head. H71 420 Replace existing lead capping with new with overhand to discharge water</p> <p><b>Metal work</b></p> <p>Redecorate. M60 120 Metalwork redecorated to match railings</p>
---	---	---

tavistock guildhall **TTC: south elevation - fabric repairs**

tavistock guildhall **river / market east elevation fabric repair**

<p><b>general</b></p> <ul style="list-style-type: none"> <li>• all drawings are copyright</li> <li>• do not scale drawing</li> <li>• report all discrepancies to project administrator</li> <li>• all dimensions to be checked on site</li> </ul>		<p><b>notes</b></p> <p><b>Stage 4 - Tender</b></p> <p><b>Note:</b></p> <ul style="list-style-type: none"> <li>- Alterations and upgrades to windows and doors detailed on window schedules and window strategy elevations (GA230 - GA234)</li> <li>- Roof works detailed on Fabric Repair Roof Plan - GA216.</li> </ul>	<p><b>rev</b></p> <p>T1: 08.02.19 - NBS Specification References Added to Notation</p>	<p><b>project:</b> Tavistock Guildhall and Police Station</p> <p><b>date:</b> Dec 2018</p> <p><b>scale:</b> 1:50 @ A1 1:100 @ A3</p> <p><b>drawing title:</b> Fabric Repair - South + River Elev.</p> <p><b>job no.:</b> 1041</p> <p><b>drawing no.:</b> GA-224</p> <p><b>rev.:</b> T1</p> <p><b>gillespie yunnie architects</b></p> <p><small>Lower Tweed Mill Shiners Bridge Dartington Devon TQ9 6JB t 01803 860010 f 01803 864929 e info@gyarchitects.co.uk</small></p>
---	--	---	--	---