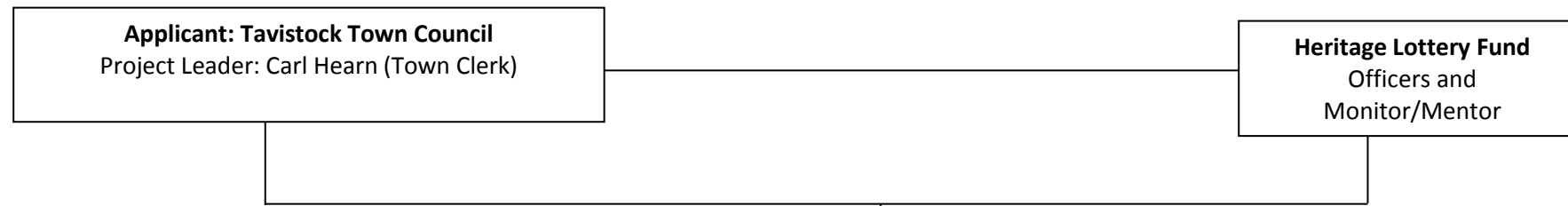
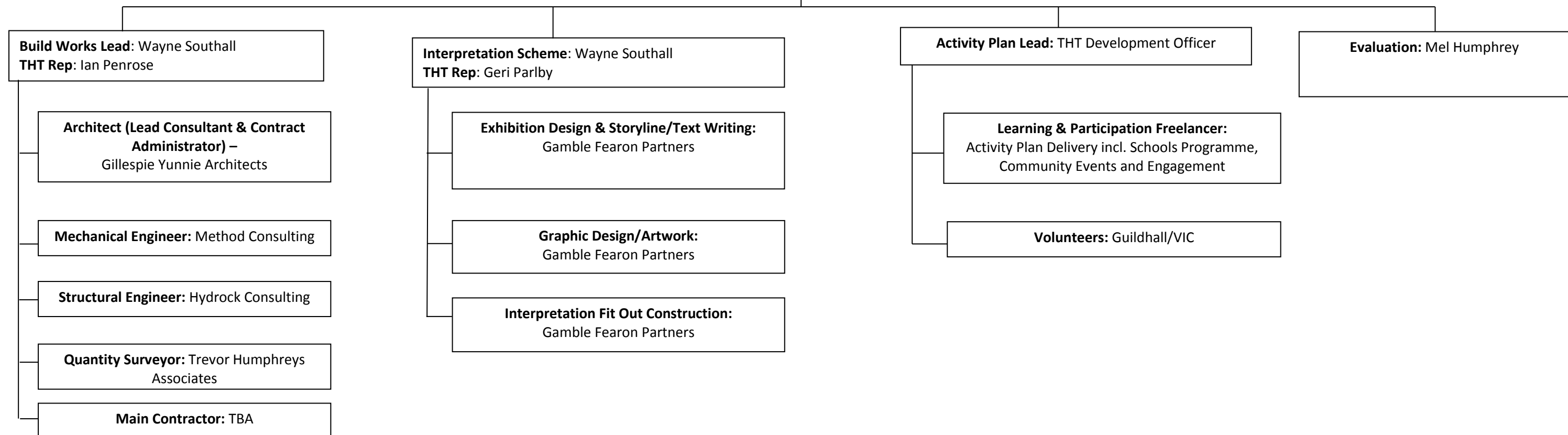


Tavistock Guildhall Gateway Centre Project Governance Structure Delivery Phase



Guildhall Gateway Centre Steering Group:
Project Leader & Chairman (Carl Hearn), Deputy Project Leader (Wayne Southall), THT Chair (Andrew Main), TTC Member Representative (Councillor Paul Ward), Project Manager (Carrie Blogg)
THT substitute in the absence of A Main = I Penrose

Gateway Centre Project Delivery Team
Chair:- Project Manager (Carrie Blogg)
Responsibilities inc:-Consultant Team Management, Capital Budget Management and Cost Control, Programme & Risk Management, Project Team Coordination, HLF Liaison & Drawdowns



Build Works Lead: Wayne Southall
THT Rep: Ian Penrose

Architect (Lead Consultant & Contract Administrator) –
Gillespie Yunnie Architects

Mechanical Engineer: Method Consulting

Structural Engineer: Hydrock Consulting

Quantity Surveyor: Trevor Humphreys Associates

Main Contractor: TBA

Interpretation Scheme: Wayne Southall
THT Rep: Geri Parlby

Exhibition Design & Storyline/Text Writing:
Gamble Fearon Partners

Graphic Design/Artwork:
Gamble Fearon Partners

Interpretation Fit Out Construction:
Gamble Fearon Partners

Activity Plan Lead: THT Development Officer

Learning & Participation Freelancer:
Activity Plan Delivery incl. Schools Programme, Community Events and Engagement

Volunteers: Guildhall/VIC

Evaluation: Mel Humphrey