

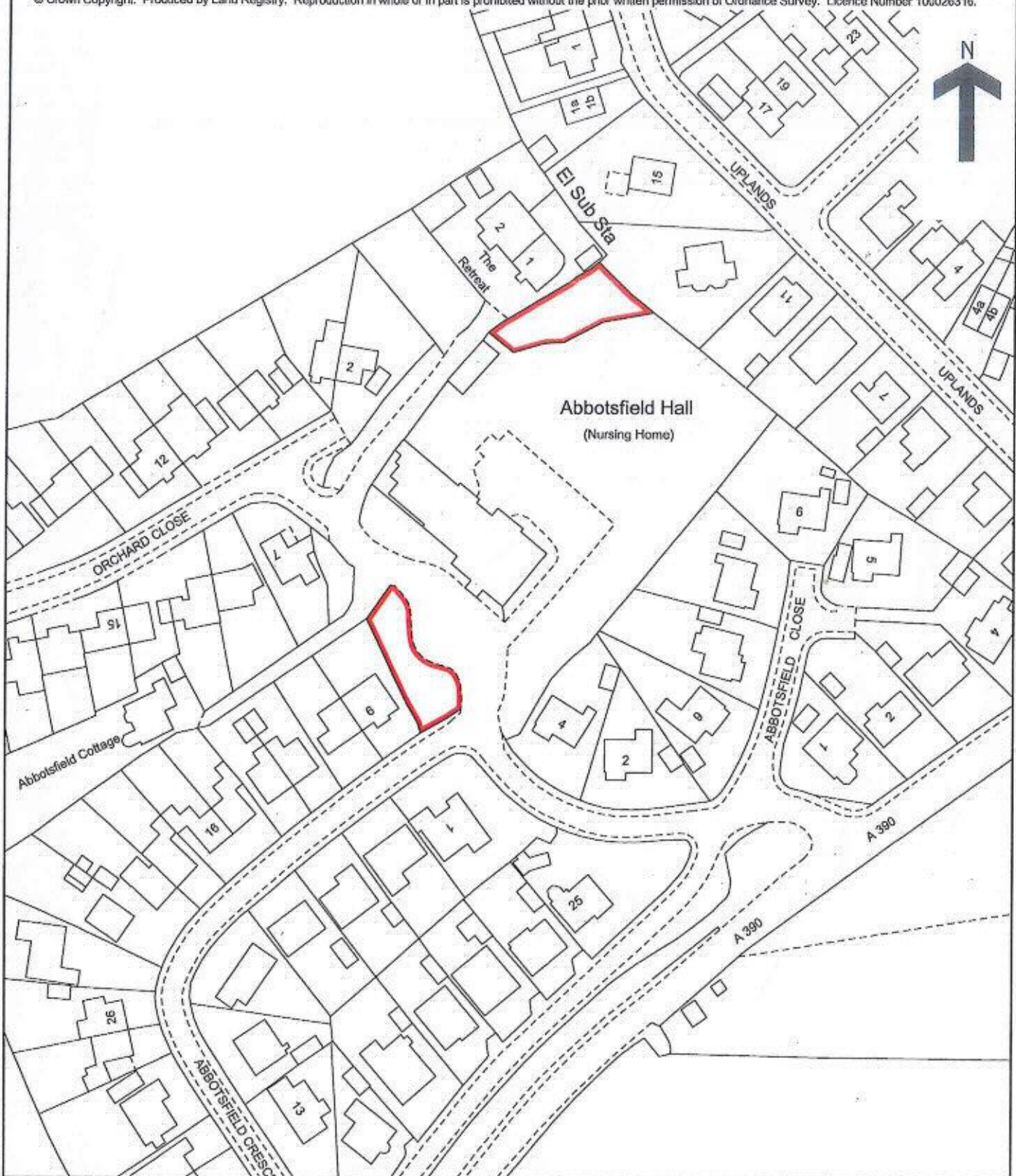
Abbotsfield

Land Registry
Official copy of
title plan

Title number **DN596862**
Ordnance Survey map reference **SX4673NE**
Scale **1:1250** enlarged from 1:2500
Administrative area **Devon: West Devon**



© Crown Copyright. Produced by Land Registry. Reproduction in whole or in part is prohibited without the prior written permission of Ordnance Survey. Licence Number 100026316.



This official copy issued on 9 February 2010 shows the state of this title plan on 9 February 2010 at 13:52:52. It is admissible in evidence to the same extent as the original (s.67 Land Registration Act 2002).

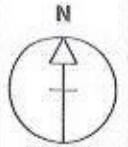
This title plan shows the general position, not the exact line, of the boundaries. It may be subject to distortions in scale. Measurements scaled from this plan may not match measurements between the same points on the ground. See Land Registry Public Guide 19 - Title Plans and Boundaries.

This title is dealt with by Land Registry, Plymouth Office.



TITLE NUMBER
DN528693

DEVON : WEST DEVON

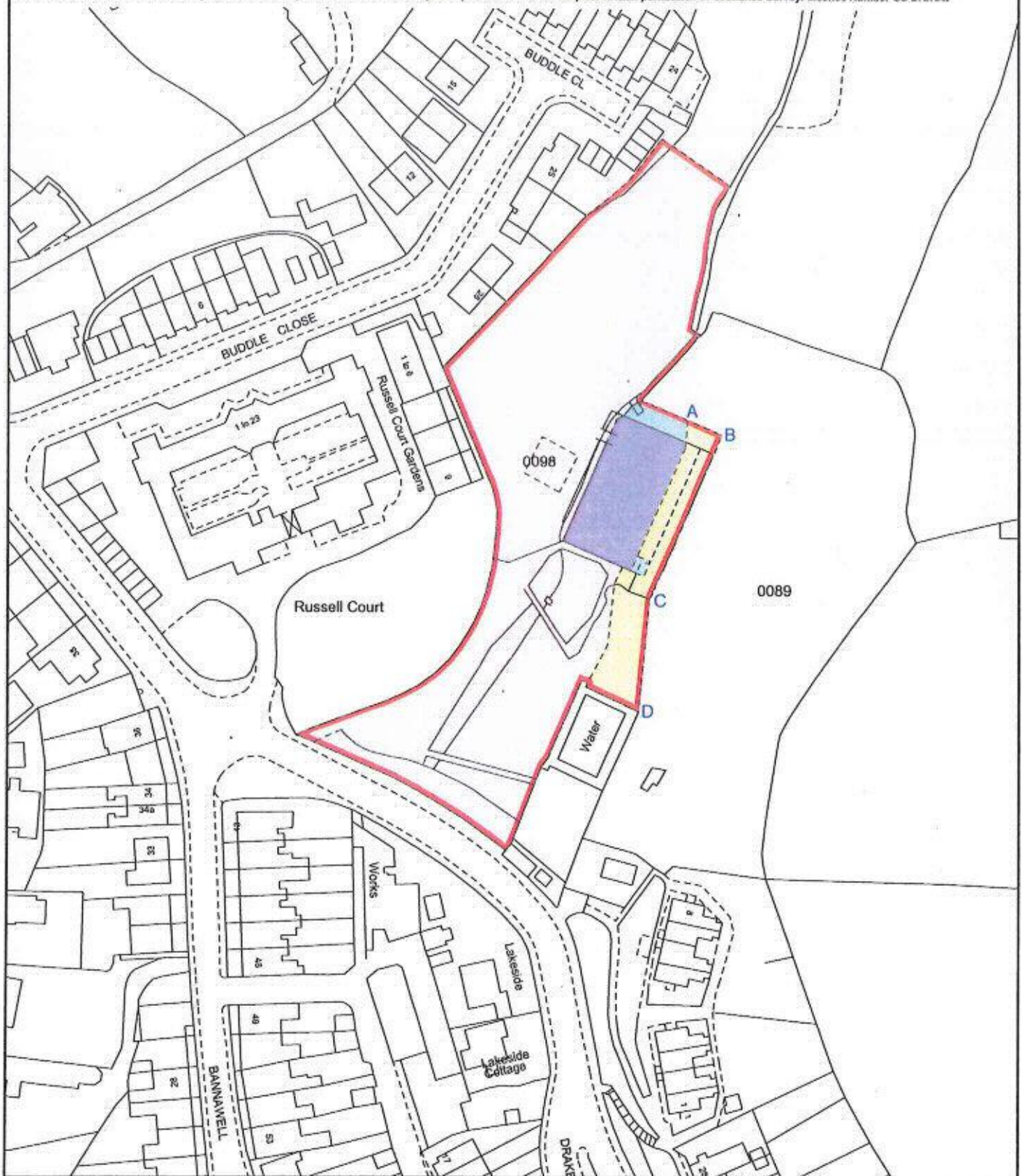


ORDNANCE SURVEY MAP REFERENCE:

SX4774NE

SCALE 1:1250 Enlarged from 1/2500

©CROWN COPYRIGHT. Produced by HMLR. Further reproduction in whole or in part is prohibited without the prior written permission of Ordnance Survey. Licence Number GD 272728.



This title plan shows the general position of the boundaries: it does not show the exact line of the boundaries. Measurements scaled from this plan may not match measurements between the same points on the ground. For more information see Land Registry Public Guide 7 - Title Plans.

This official copy shows the state of the title plan on 27 June 2006 at 8:30:25. It may be subject to distortions in scale. Under s.67 of the Land Registration Act 2002, this copy is admissible in evidence to the same extent as the original. Issued on 27 June 2006.

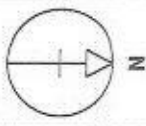
This title is dealt with by the Plymouth District Land Registry.



LR

TITLE NUMBER
DN528693

DEVON : WEST DEVON

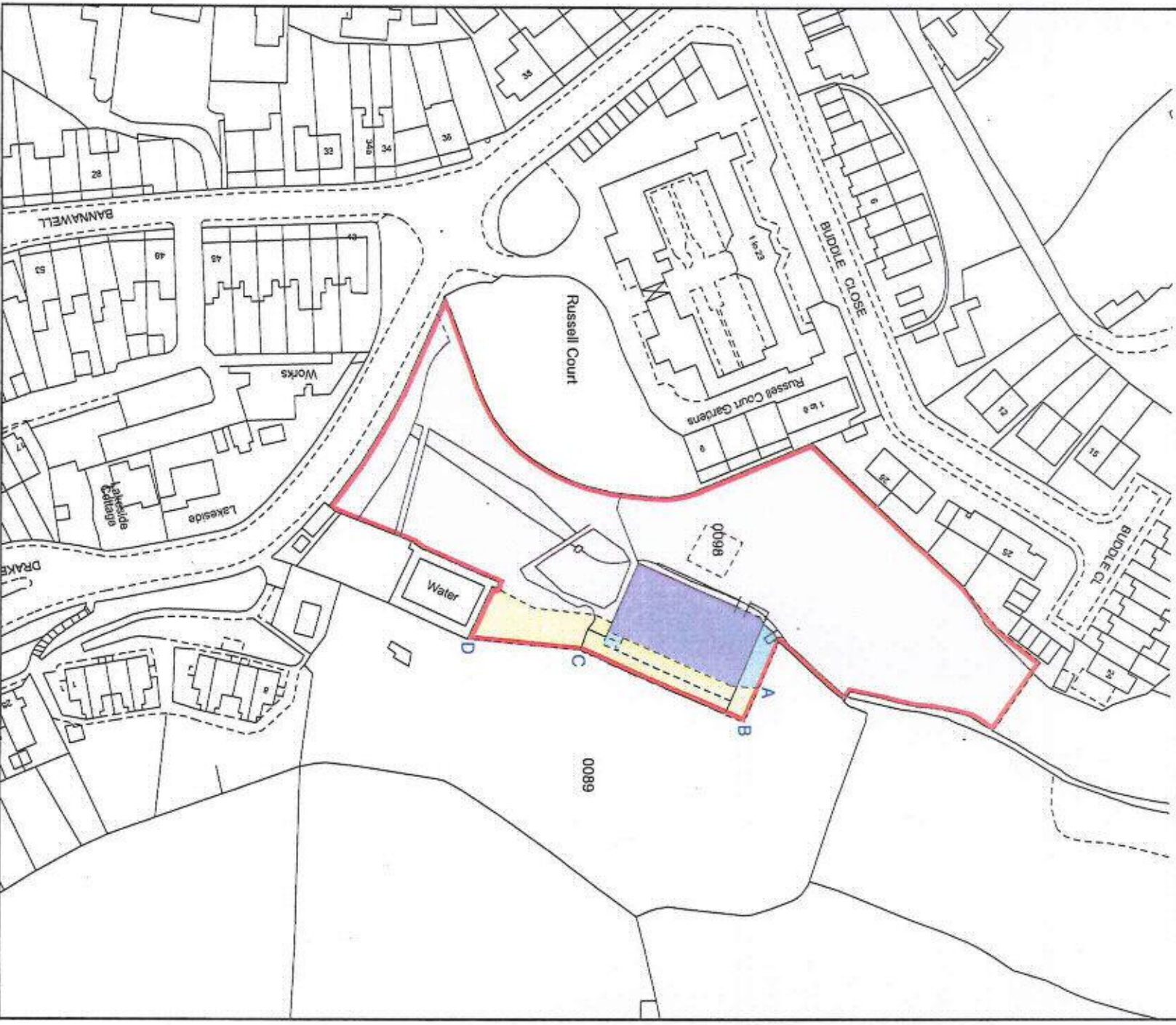


ORDNANCE SURVEY MAP REFERENCE:

SK4774NE

SCALE 1:1250 Enlarged from 1:2500

©CROWN COPYRIGHT. Produced by HMLR. Further reproduction in whole or in part is prohibited without the prior written permission of Ordnance Survey. Licence Number GD 272728.



This title plan shows the general position of the boundaries: it does not show the exact line of the boundaries. Measurements scaled from this plan may not match measurements between the same points on the ground. For more information see Land Registry Public Guide 7 - *Title Plans*.

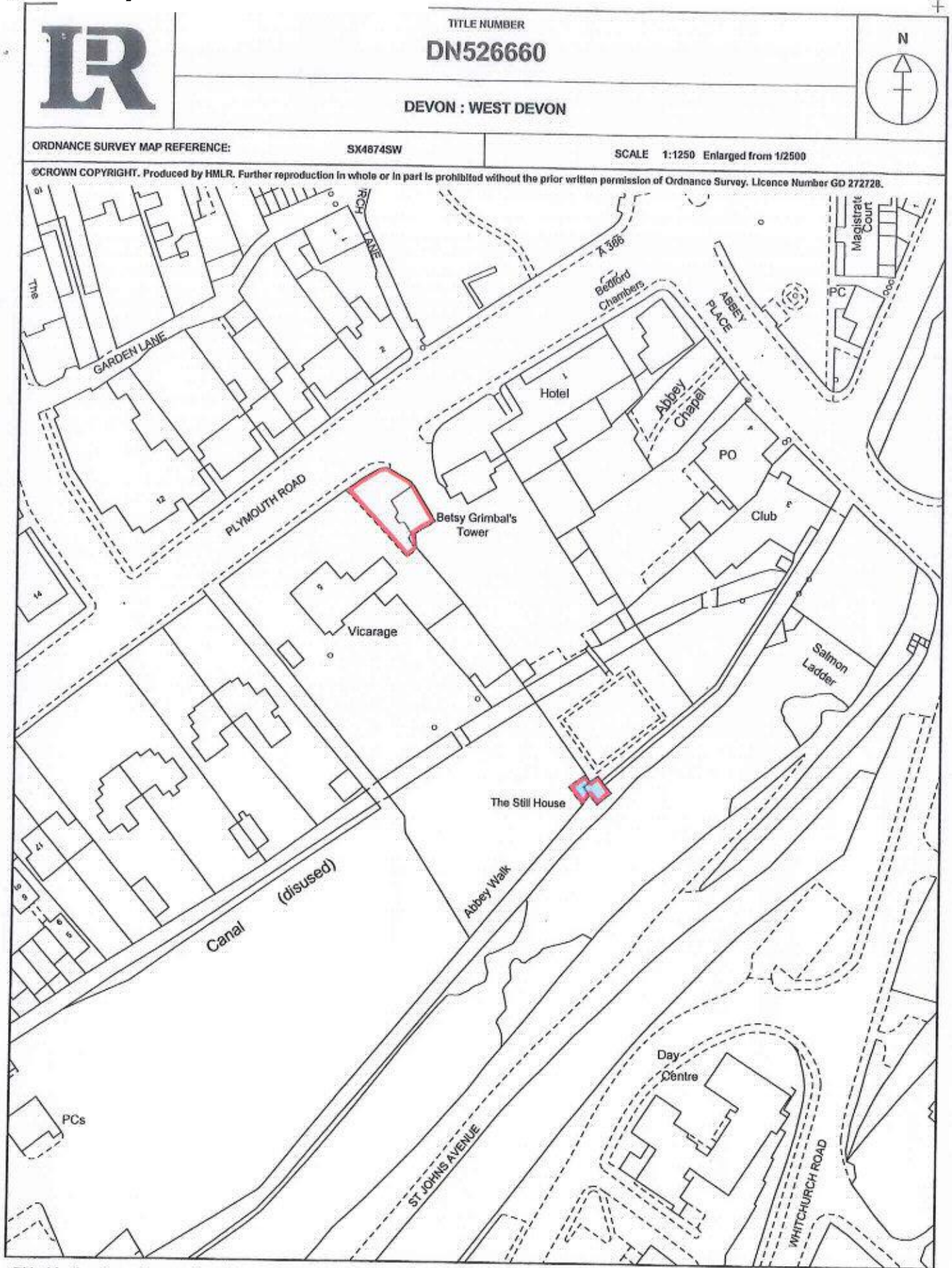
This official copy shows the state of the title plan on **27 June 2006** at 8:30:25. It may be subject to distortions in scale.

Under s.67 of the Land Registration Act 2002, this copy is admissible in evidence to the same extent as the original.
Issued on 27 June 2006.

This title is dealt with by the **Plymouth District Land Registry**.



Betsy Grimbal's Tower



This title plan shows the general position of the boundaries: it does not show the exact line of the boundaries. Measurements scaled from this plan may not match measurements between the same points on the ground. For more information see Land Registry Public Guide 7 - Title Plans.

This official copy shows the state of the title plan on 26 June 2006 at 15:40:23. It may be subject to distortions in scale. Under s.67 of the Land Registration Act 2002, this copy is admissible in evidence to the same extent as the original. Issued on 26 June 2006.

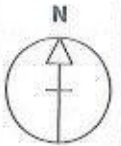
This title is dealt with by the Plymouth District Land Registry.



Bishopsmead



TITLE NUMBER
DN535982



DEVON : WEST DEVON

ORDNANCE SURVEY MAP REFERENCE:

SX4872NW

SCALE 1:1250 Enlarged from 1/2500

©CROWN COPYRIGHT. Produced by HMLR. Further reproduction in whole or in part is prohibited without the prior written permission of Ordnance Survey. Licence Number GD 272726.



This title plan shows the general position of the boundaries: it does not show the exact line of the boundaries. Measurements scaled from this plan may not match measurements between the same points on the ground. For more information see Land Registry Public Guide 7 - Title Plans.

This official copy shows the state of the title plan on 31 July 2006 at 15:59:48. It may be subject to distortions in scale. Under s.67 of the Land Registration Act 2002, this copy is admissible in evidence to the same extent as the original. Issued on 31 July 2006.

This title is dealt with by the Plymouth District Land Registry.

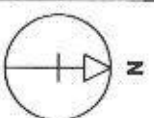


6230

LR

TITLE NUMBER
DN528736

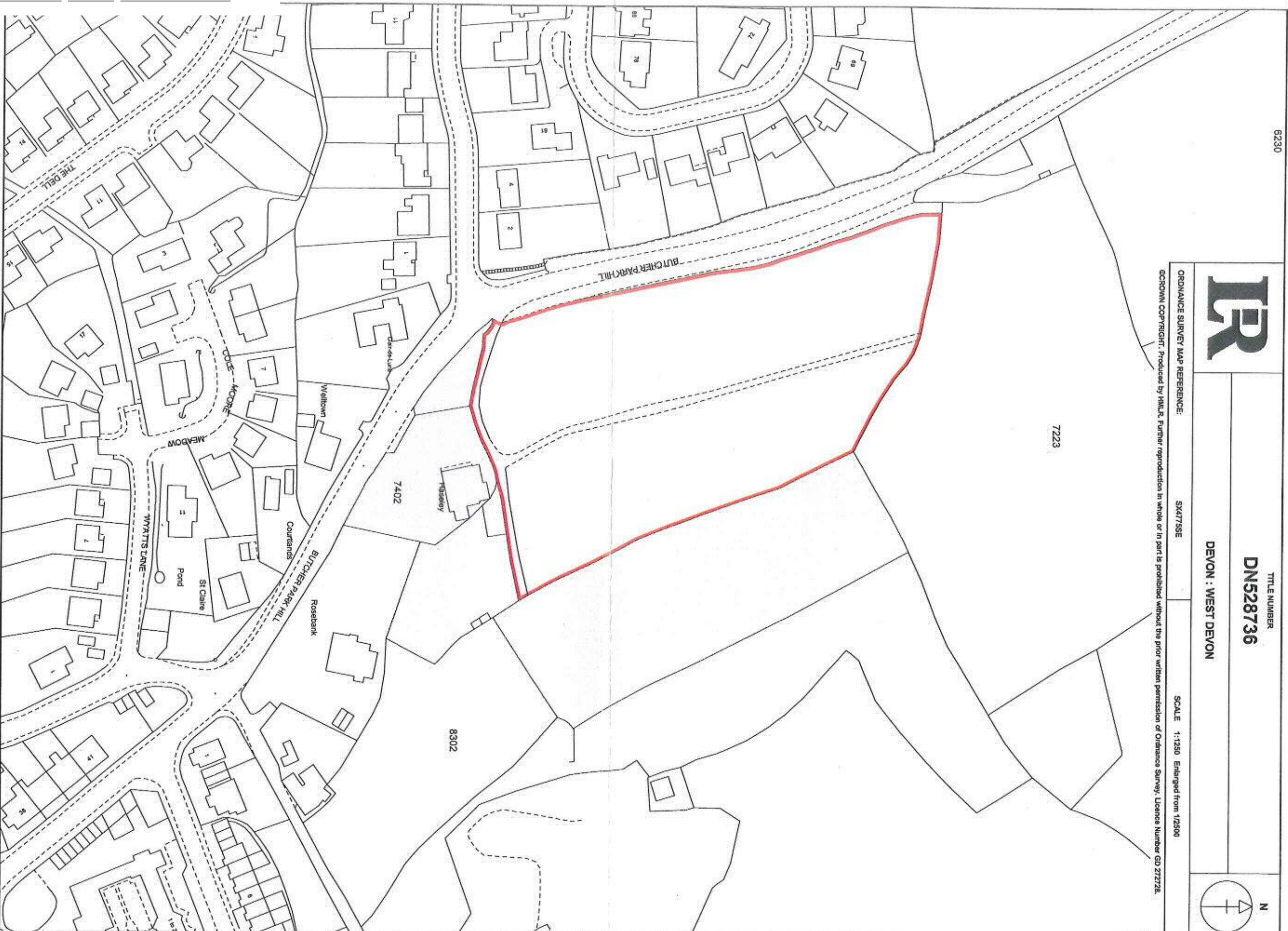
DEVON : WEST DEVON



SCALE 1:1250 Enlarged from 1:2500

ORDNANCE SURVEY MAP REFERENCE: SX4775SE

GCROWN COPYRIGHT. Produced by H.M.L.R. Further reproduction in whole or in part is prohibited without the prior written permission of Ordnance Survey. Licence Number GD 272728.



Butchers Park Allotments

This title plan shows the general position of the boundaries: it does not show the exact line of the boundaries. Measurements scaled from this plan may not match measurements between the same points on the ground. For more information see Land Registry Public Guide 7 - *Title Plans*.

This official copy shows the state of the title plan on 26 June 2006 at 15:41:53. It may be subject to distortions in scale.

Under s.67 of the Land Registration Act 2002, this copy is admissible in evidence to the same extent as the original.

Issued on 26 June 2006.

This title is dealt with by the Plymouth District Land Registry.



H. M. LAND REGISTRY

NATIONAL GRID PLAN SX 4774 SECTION A
DEVON ©

Scale 1/1250
Enlarged from 1/2500
WEST DEVON DISTRICT



© Crown Copyright 1969

TITLE No. DN10940



Courtlands

This official copy is issued, and shows the state of this title plan, on 10 June 2009 at 10:14:36. It is admissible in evidence to the same extent as the original (s.67 Land Registration Act 2002). This title plan shows the general position, not the exact line, of the boundaries. It may be subject to distortions in scale. Measurements scaled from this plan may not match measurements between the same points on the ground. See Land Registry Public Guide 19 - Title Plans and Boundaries.

This title is dealt with by Land Registry, Plymouth Office.

© Crown Copyright. Produced by Land Registry. Reproduction in whole or in part is prohibited without the prior written permission of Ordnance Survey. Licence Number 100026316.