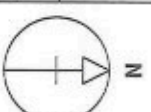


# LR

TITLE NUMBER

**DN528912**

DEVON : WEST DEVON

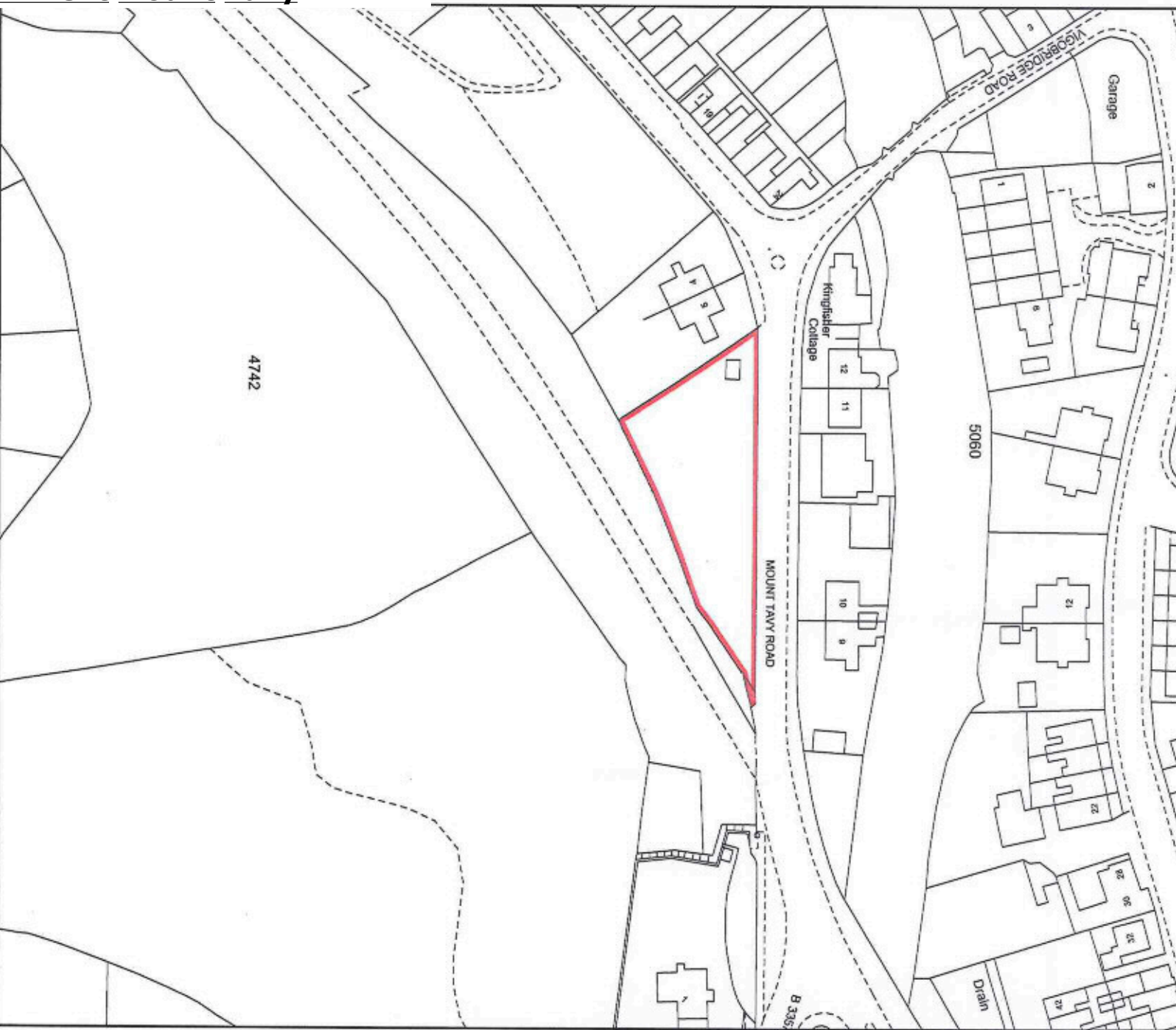


ORDNANCE SURVEY MAP REFERENCE:

SX4874NE

SCALE 1:1250 Enlarged from 1:2500

©CROWN COPYRIGHT. Produced by HMLR. Further reproduction in whole or in part is prohibited without the prior written permission of Ordnance Survey. Licence Number GD 272728.



4742

## **Dolvin Road Cemetery adj embankment Mount Tavy**

This title plan shows the general position of the boundaries: it does not show the exact line of the boundaries. Measurements scaled from this plan may not match measurements between the same points on the ground. For more information see Land Registry Public Guide 7 - *Title Plans*.

This official copy shows the state of the title plan on **27 June 2006 at 7:42:59**. It may be subject to distortions in scale. Under s.67 of the Land Registration Act 2002, this copy is admissible in evidence to the same extent as the original.

Issued on 27 June 2006.

This title is dealt with by the **Plymouth District Land Registry**.



# Dolvin Road Cemetery



PLAN TO LETTER

DEVON : WEST DEVON



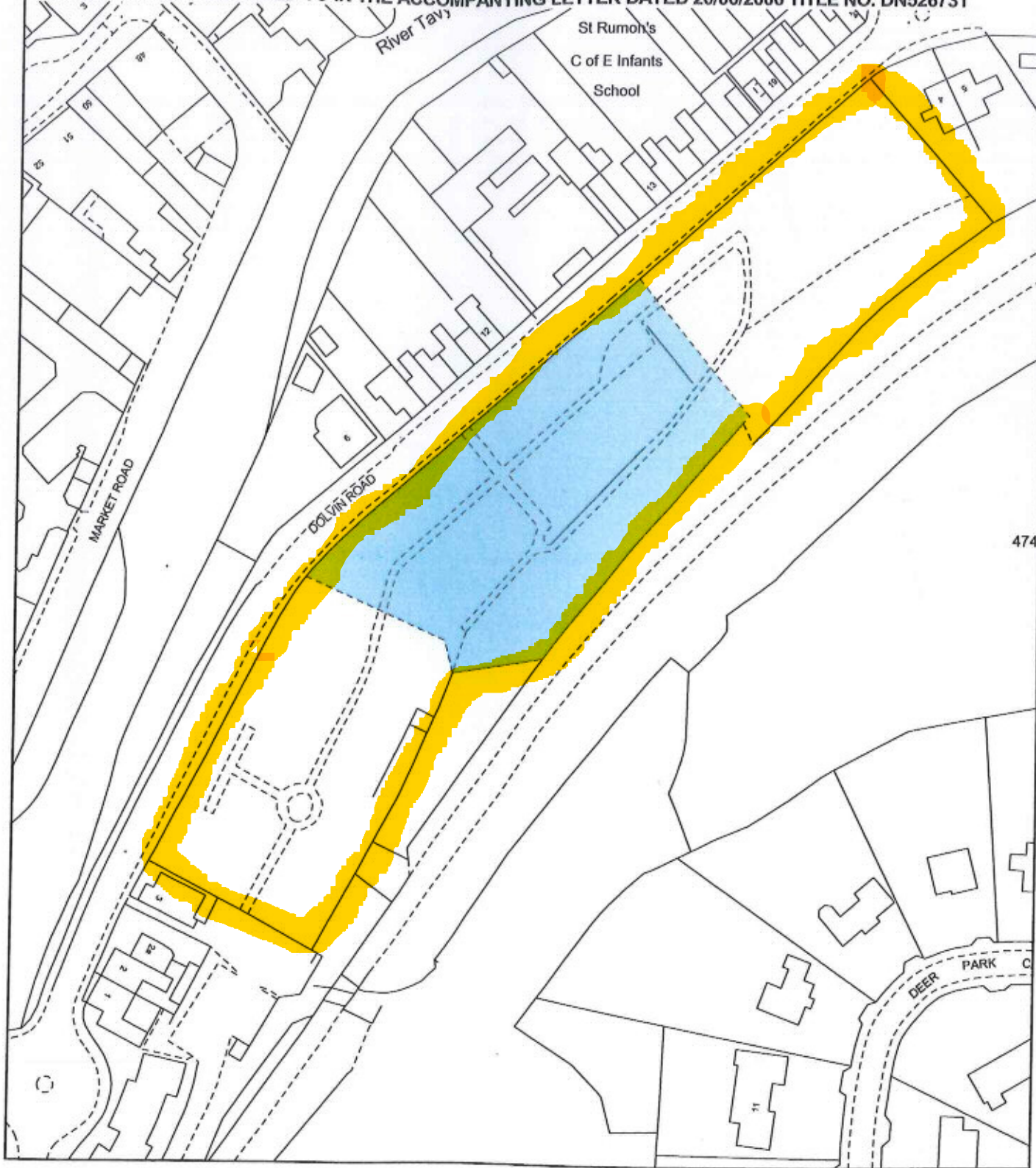
ORDNANCE SURVEY MAP REFERENCE:

SX4874SW

SCALE 1:1250 Enlarged from 1/2500

©CROWN COPYRIGHT. Produced by HMLR. Further reproduction in whole or in part is prohibited without the prior written permission of Ordnance Survey. Licence Number GD 272728.

**THIS IS THE PLAN REFERRED TO IN THE ACCOMPANYING LETTER DATED 26/06/2006 TITLE NO. DN526731**



474

This plan shows the general position of the boundaries, it does not show the exact line of boundaries.  
Measurements scaled from this plan may not match measurements between the same points on the ground.



# Market Road adj rough land in River Tavy, Guildhall Toilets and Plantations



DN536378

DEVON : WEST DEVON

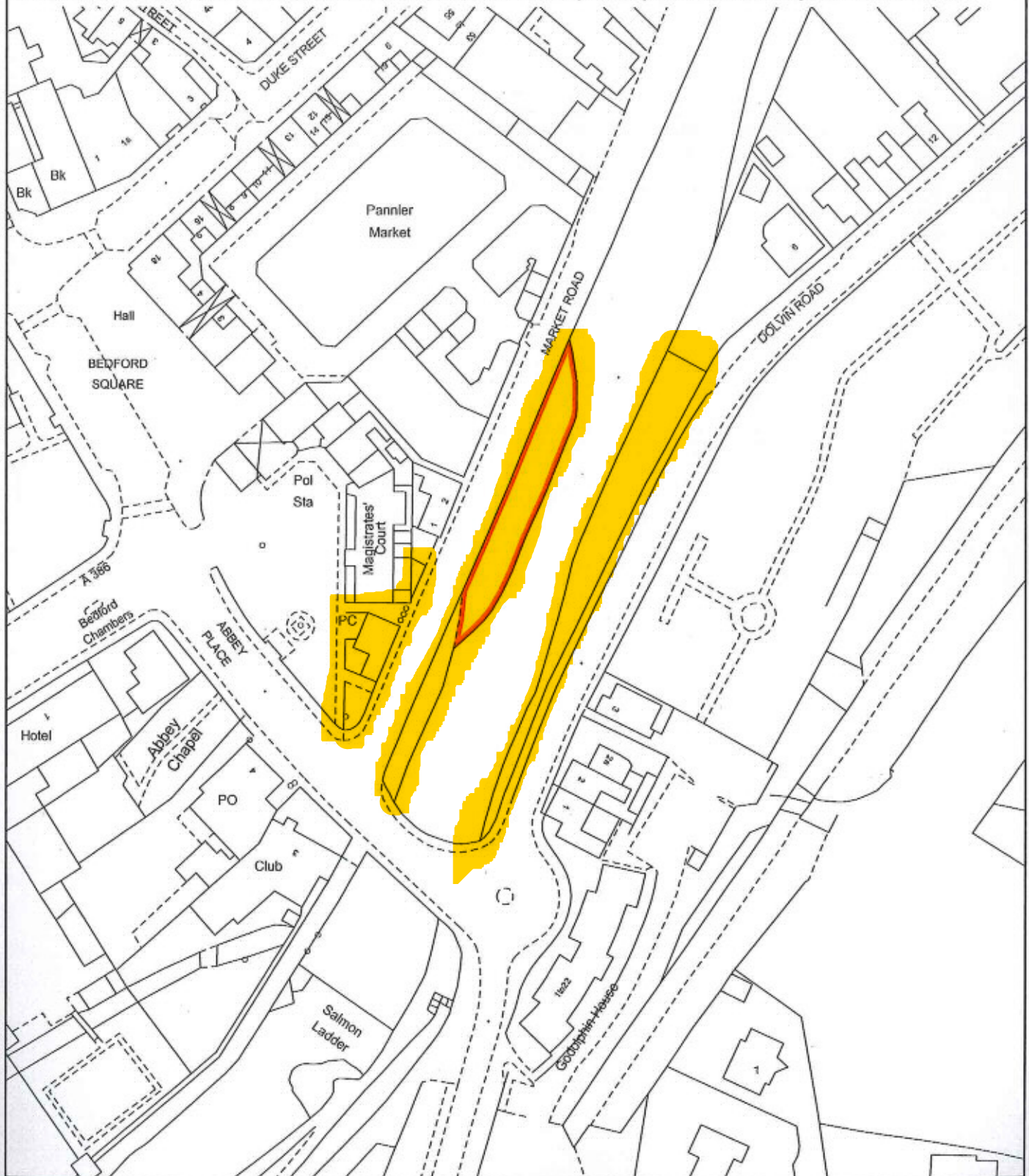


ORDNANCE SURVEY MAP REFERENCE:

SX4874SW

SCALE 1:1250 Enlarged from 1/2500

©CROWN COPYRIGHT. Produced by HMLR. Further reproduction in whole or in part is prohibited without the prior written permission of Ordnance Survey. Licence Number GD 272728.



This title plan shows the general position of the boundaries: it does not show the exact line of the boundaries. Measurements scaled from this plan may not match measurements between the same points on the ground. For more information see Land Registry Public Guide 7 - Title Plans.

This official copy shows the state of the title plan on 7 August 2006 at 9:27:48. It may be subject to distortions in scale. Under s.67 of the Land Registration Act 2002, this copy is admissible in evidence to the same extent as the original.

Issued on 7 August 2006.

This title is dealt with by the Plymouth District Land Registry.

